



Company Profile

2021

Timeline of The Company

2011
Clinical Product
Division Started

2019
Gibthai setup
Professional Diagnostic
Division for Molecular
Diagnostic market

1984
Gibthai Co., Ltd.
established

2017
Clinical product division separated to
become “**AEC Healthcare Co., Ltd.**”

2021
Professional
Diagnostic
Division has
joined “**AEC
Healthcare**”
to form synergy
and best services

About Us

AEC HEALTHCARE CO., LTD.

A distributor of molecular and clinical diagnostics equipment, supplies, reagents and kits for clinical laboratories to support the fast expansion of healthcare industry effectively and access to our customer extensively.

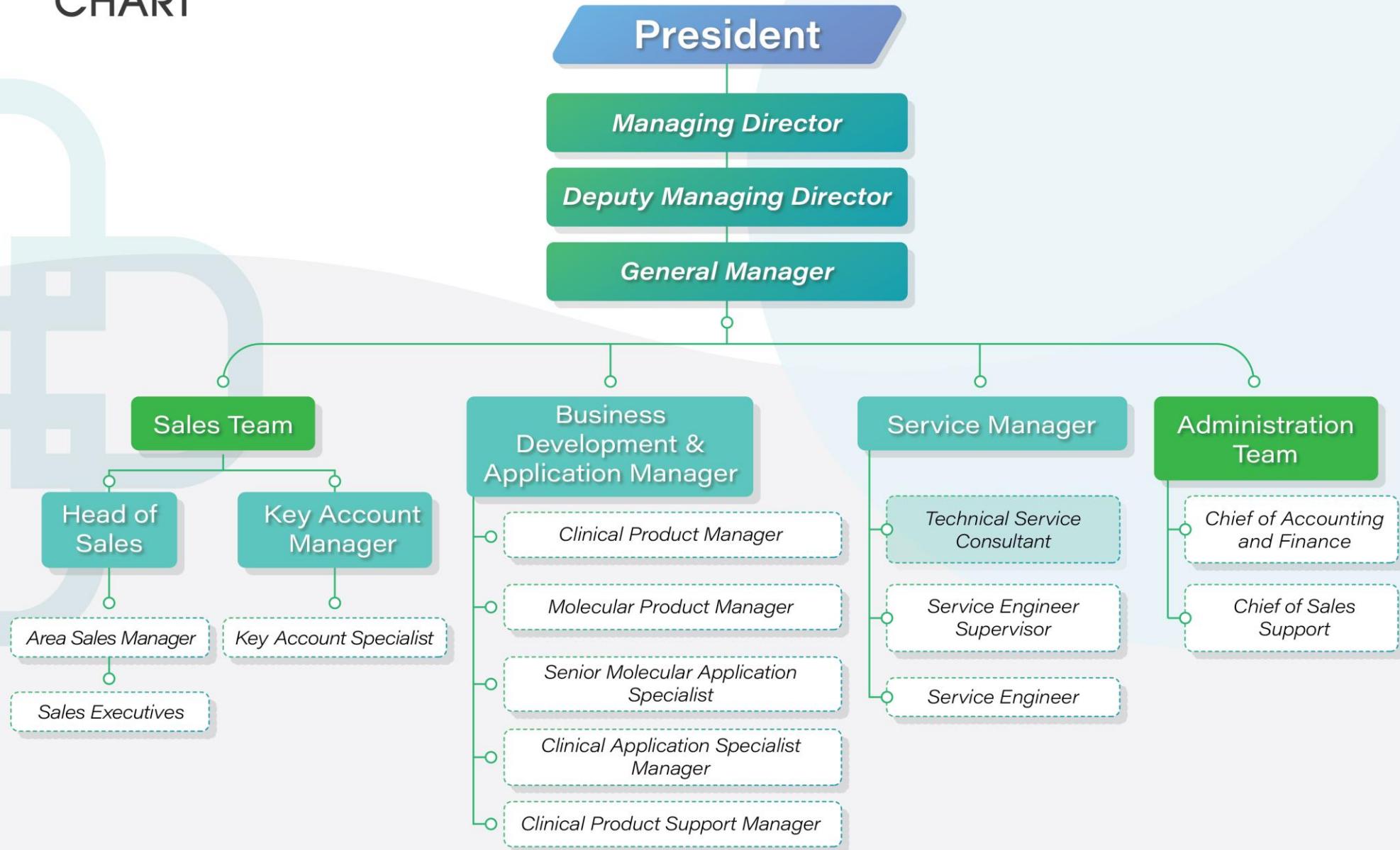
We build up a strong and healthy market trust through a simple principle that we follow:

“A Total Provider for Diagnostic Solution“

General Profile

Established:	January 2017
Area Cover:	Thailand
Total employees:	70 (Till of May 2021)
Total Salesperson:	16
Total Product Specialist:	5
Total Application Specialist:	12
Total Service engineer:	13
No. of supplier:	Over 20

ORGANIZATION CHART



Our Brands



BioTest
en.biotests.com.cn/



Chungdo
chungdo.com/kr/



Citotest
citotest.com/en/



Digisystem
digisystemlab.com/



Fast Track
fast-trackdiagnostics.com/



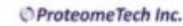
HUMAN
human.de/



Healgen
healgen.com/



Mindray
mindray.com



ProteomeTech
proteometech.com/zh-hans/



Qiagen
qiastat-dx.com/row/



Rapigen



SLEE
slee.de



Sartedt AG
sarstedt.com/en/home/



Sysmex
sysmex.com



Maccura
maccura.com



Ortho Clinical Diagnostics
orthoclinicaldiagnostics.com



TrueVAC



Vitassay
vitassay.com/



Wondfo
en.wondfo.com.cn/



Xunda



Zybio
zybio.com/

Product Portfolio

Molecular Diagnostics



- Automated Nucleic Acid Extraction
- Multiplex Real-time PCR
- Allergy Test

POCT



- QiaStat-Dx

Clinical Diagnostics



- Hematology
- Blood Bank
- Clinical Instrument
- Clinical Chemistry
- Immunology
- Coagulation
- Pathology
- Microbiology

Rapid Test



- Urine Analysis

Lab Supplies



- Pathology
- Blood Collection Tube

Molecular Diagnostics

Automated Nucleic Acid Extraction



Real-time PCR System



Liquid Handling and Real-time PCR System



Multiplex Real-time PCR Kits



Point-Of-Care Testing (POCT)



Allergy Test



POCT



Danger

H225/ H302 + H332/ H313/ H314/
H334/ H336/ H412/ EUH032/ EUH071
P210/ P261/ P280/ P284/
P305+P351+P338/ P308/ P310/ P340

contains
ethanol/ guanidine hydrochloride/ guanidine
thiocyanate/ isopropanol/ proteinase K/
t-Octylphenoxypolyethoxyethanol

QIAGEN GmbH,
QIAGEN Strasse 1,
40724 Hilden, GERMANY
Tel: +49-2103-29-0



QIAstat-Dx® Respiratory 2019-nCoV Panel Cartridge

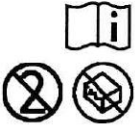
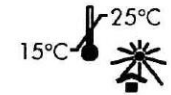


GTIN 04053228038467

LOT 12345678910

SN 5555555555

MAT 1120368



Product of Spain

SARS-CoV-2

- Detection of **22 pathogens** in about an hour
- Can accept both **direct swabs** and **liquid samples (300 µL)**
- Room temperature stable
- Less than a minute hands-on time
- True Sample to Insight solution

Viral

- Influenza A
- Influenza A subtype H1N1/2009
- Influenza A subtype H1
- Influenza A subtype H3
- Influenza B
- Coronavirus 229E
- Coronavirus HKU1
- Coronavirus NL63
- Coronavirus OC43
- Parainfluenza virus 1
- Parainfluenza virus 2
- Parainfluenza virus 3
- Parainfluenza virus 4
- Respiratory Syncytial virus A/B
- human Metapneumovirus A/B
- Adenovirus
- Bocavirus
- Rhinovirus/Enterovirus

Bacterial

- *Mycoplasma pneumoniae*
- *Legionella pneumophila*
- *Bordetella pertussis*

Clinical Diagnostics

- Hematology
- Blood Bank
- Clinical Instrument
- Clinical Chemistry
- Immunology
- Coagulation
- Pathology
- Microbiology

20% PRODUCT LINE - UP

Automated Chemistry Analyzer



JCA-BM8010/C BX-3010 BX-4000

Automated Hematology Analyzer

XN-Series XN-1000 XN-2000

Automated Immunoassay Analyzer

HISCL-800 HISCL-6000

www.aechealthcare.com

Ortho Clinical Diagnostics



VITROS® XT 3400
Chemistry System

A Mindray Company



TDR-X060

20% PRODUCT LINE - UP

Blood Bank




TRANSWAAG Pro Whole Blood Donation Dry Tempering of Blood Components Rotary and Digital Rotary Platelet Shaker Blood Cell Counter

Pathology



Tissue Processor Embedding Center Rotary Microtome Pathology Labeling System

Cryostat Floating Bath & Slide Warmer Staining System

Urine Analysis




Urine Strip Reader: AS720 Urine Strip Reader: U120, U500 Urine Strip

www.aechealthcare.com

AEC Healthcare
A 3N HOLDING COMPANY

Rapid Test

Rapid Test



RightSign
Methamphetamine
Test Strip



RapiGEN Inc.

BIOCREDIT Test
Kits - InFlu, Dengue



Lab Supplies

Lab Supplies



CITOTEST[®]
LABWARE MANUFACTURING CO., LTD

Lab Supplies



Microscope Line

Human
Diagnostics Worldwide



- Expanded line
- Enhanced features
- Modern, ergonomic design

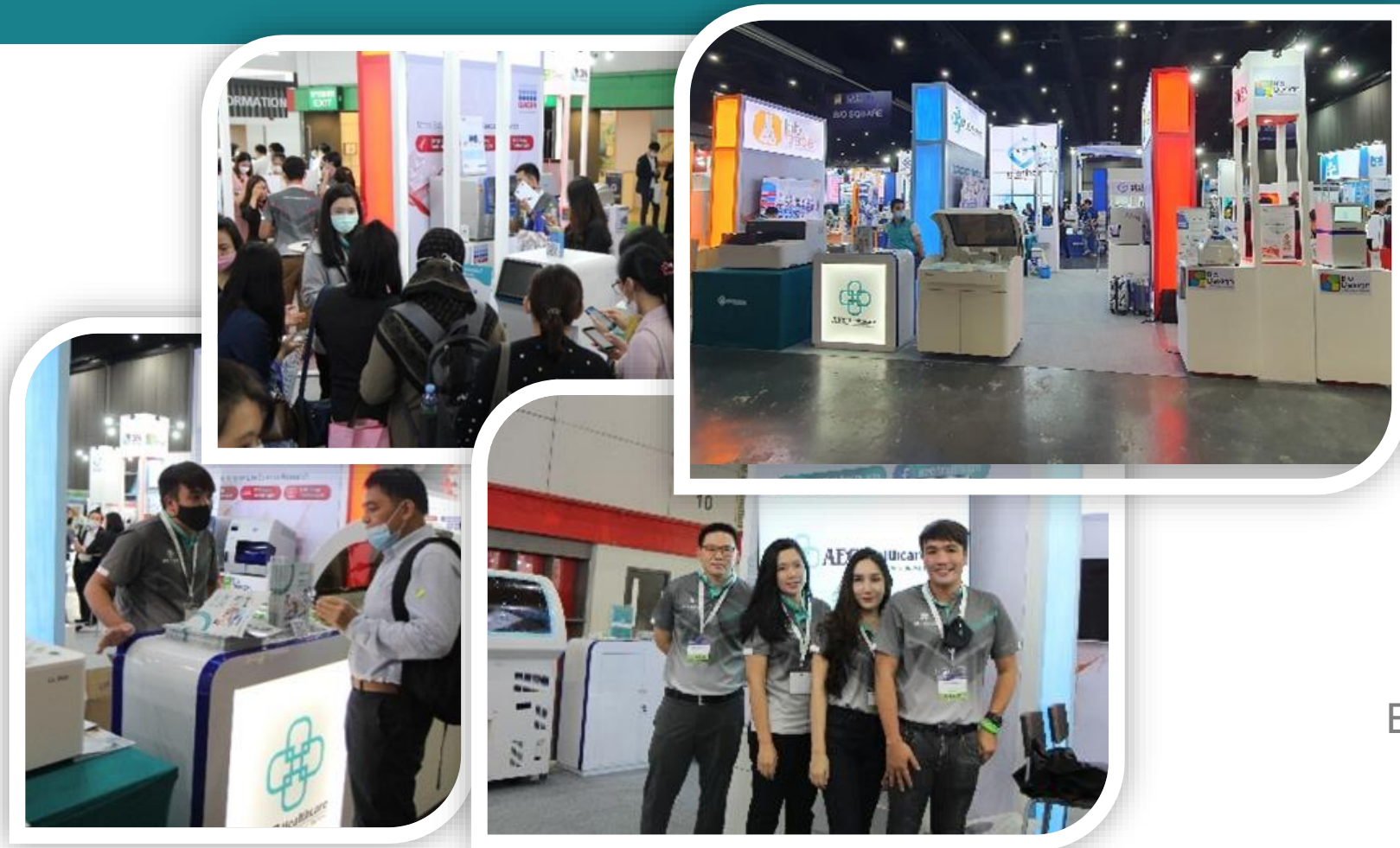
Pre-Analysis System

Event & Activities



Annual Meeting of Medical
Technologist of Thailand
2018-2019

Event & Activities



Thailand LAB 2020
Exhibition & Conference

Corporate Social Responsibilities

Fight Against COVID-19 Donation

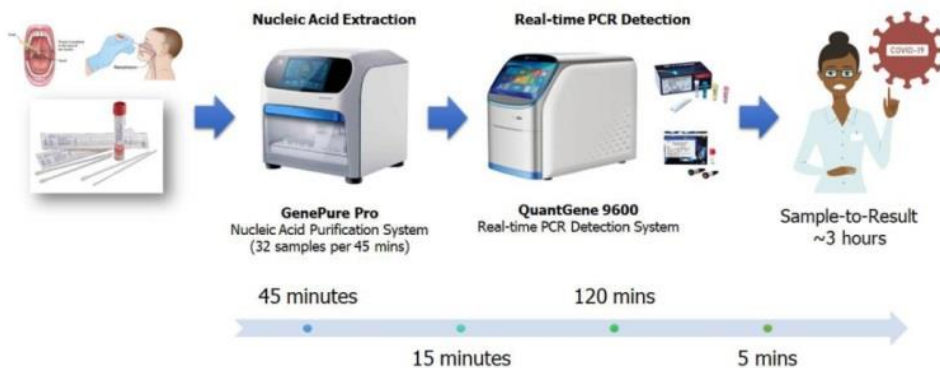


Special Project COVID-19 Mobile Laboratory Unit

3N Holding Group of Companies have teamed up to jointly develop a modular Real-time PCR diagnosis unit for COVID-19 . The mobile lab structure and system have been designed to avoid contamination and meet the public's requirements for safe and fast testing.



ขั้นตอนการตรวจ โรคติดเชื้อ COVID-19



Special Project COVID-19 Mobile Laboratory Unit

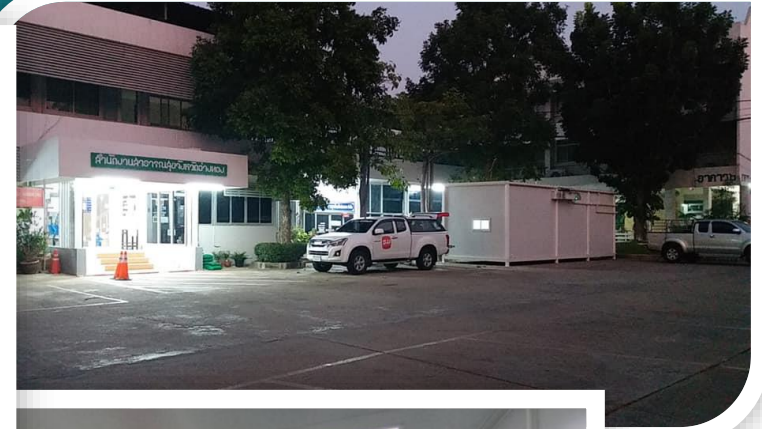


Specimen preparation area

Reagent preparation area

Post-PCR/ Detection area

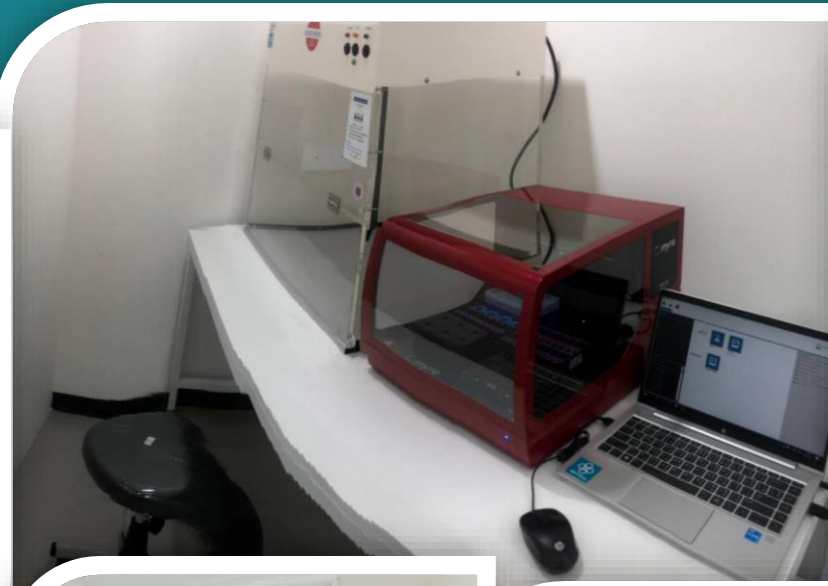
Special Project COVID-19 Mobile Laboratory Unit



Our Reference Sites (COVID-19)



Our Reference Sites (COVID-19)





www.aechealthcare.com



info@aechealthcare.com



[@aechealthcare](https://www.facebook.com/aechealthcare)



[@aechealthcare](https://www.line.me/aechealthcare)